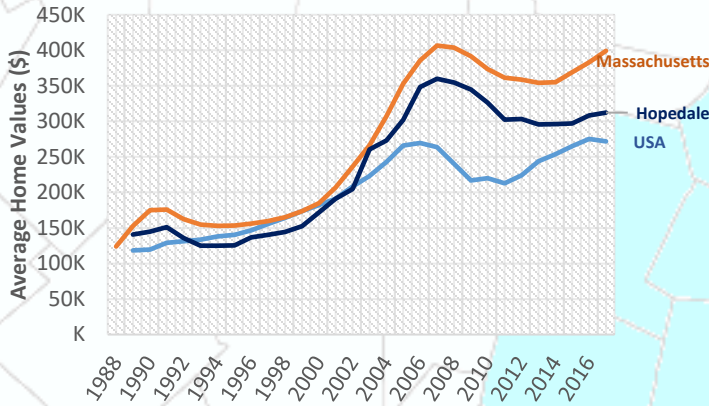


Hopedale

STRENGTH IN NUMBERS: 2017 EDITION Demographic Data for the 495/MetroWest Region

Rising Home Values



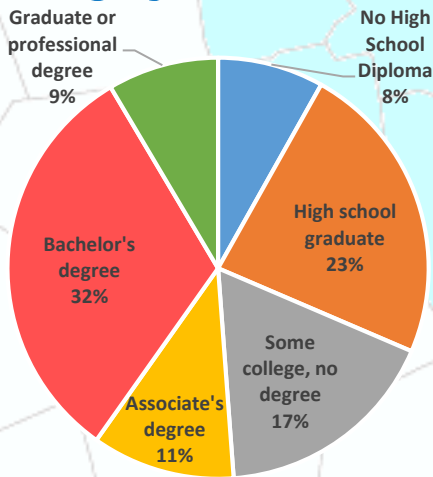
Beyond the year to year averages, in February 2017, the median single family home in Hopedale sold for \$425,000¹. This is higher than the state median sale price for the same month which was \$319,000¹ and the national median for February which was \$270,400².

Increasing Payroll



From Q2 2015 to Q2 2016 the payroll for all places of employment in Hopedale was \$112,847,177.³ As the town has recovered from the recession the payroll has increased significantly in the last few years.

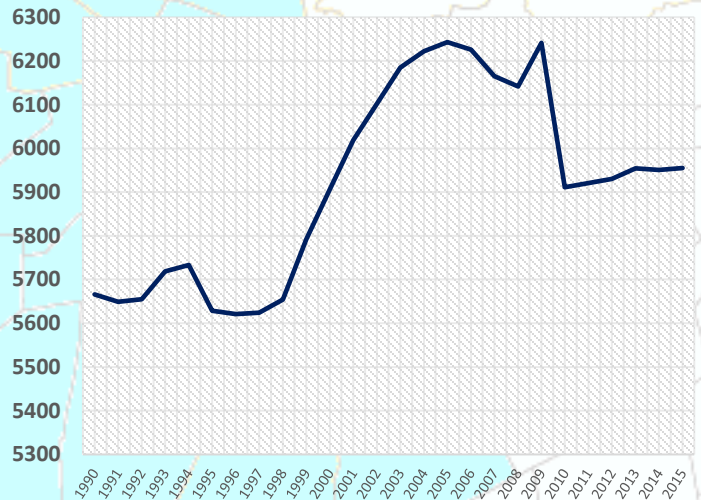
Highly Educated



2011-2015 ACS (U.S. Census Bureau)

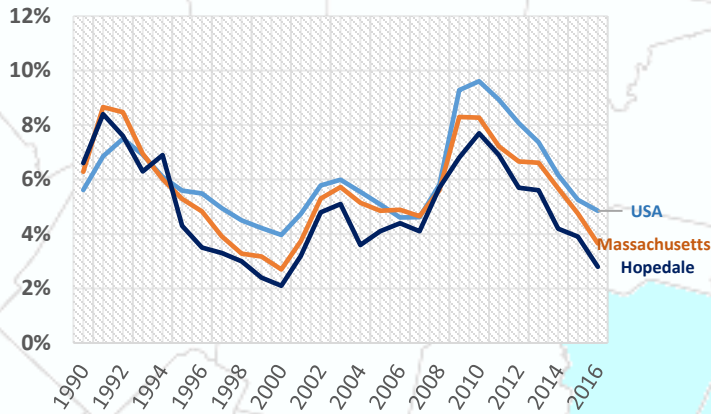
Hopedale has a highly educated population compared to the state and to the nation with 41% of residents having a bachelor's degree or higher. During the same time 40.5% of people in Massachusetts had a bachelor's degree or higher, while only 29.8% of all people in the U.S. had one.⁴

Population



The population of Hopedale has been increasing slowly after a relatively larger pre-2010 increase. In 2000, the population of Hopedale was 5,907 this increased to 5,911 by 2010, and in 2015, the population of Hopedale was estimated to be approximately 5,955.⁵

Low Unemployment



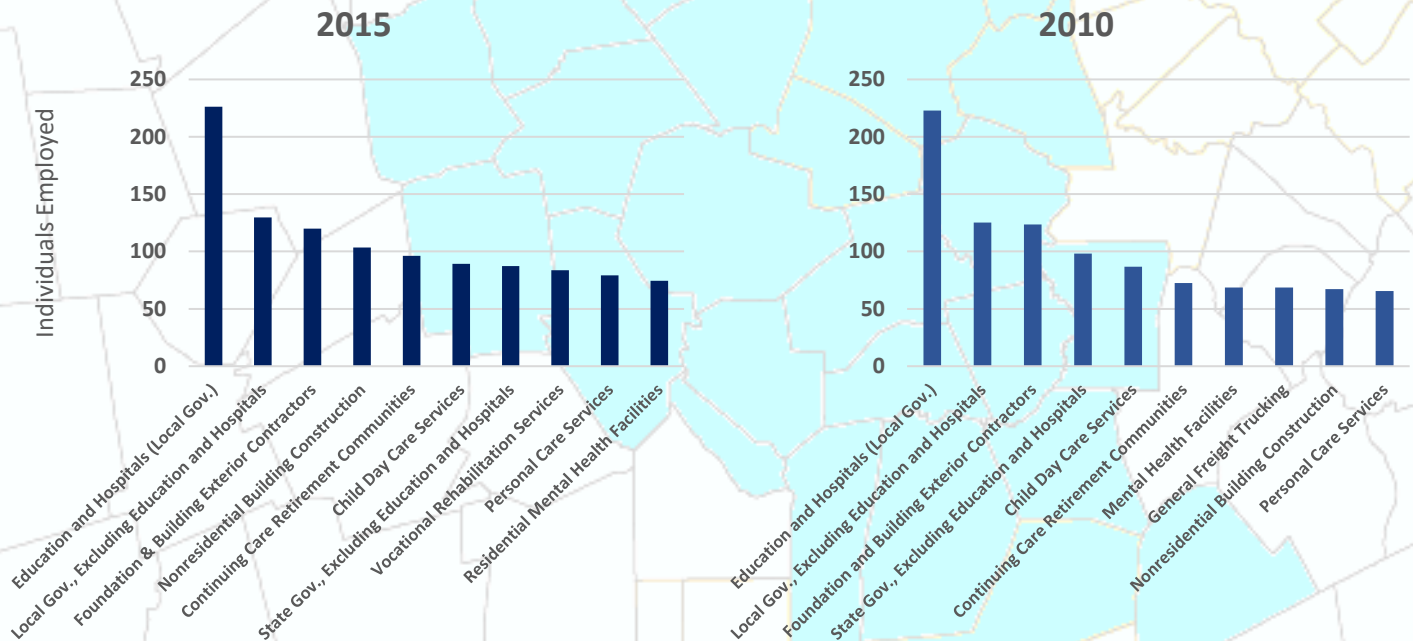
Expanding Employers



Beyond the year to year averages, in February 2017, the unemployment rate in Hopedale was 4.3%. This is higher than the state and 495/MetroWest regional unemployment rates, which were both 3.4%, but lower than the national unemployment rate of 4.8%³

The number of employers in Hopedale has been increasing. In 2001, there were 147 employers in the town, and by Q2 2016 this number had increased to 196.³

Top Ten Industries In Hopedale



Top Ten Industries data and analysis conducted by the Public Policy Center at UMass Dartmouth for the 495/MetroWest Partnership in support of the 495/MW Suburban Edge Community Commission utilizing 2014 US Census Bureau Local Employment Dynamics. For more information on these data sets please visit <http://lehd.ces.census.gov/>

Sources:

- Mass.gov Municipal Databank <http://www.mass.gov/dor/local-officials/municipal-databank-and-local-aid-unit/databank-reports-new.html> (Line graph municipal data)
 1. The Warren Group <http://www.twgstats.com/tssub/start.asp> 2. Ycharts Average US Home Values https://ycharts.com/indicators/sales_price_of_existing_homes
 3. Mass.gov Labor and Workforce Development <http://www.mass.gov/lwd/economic-data/> 4. US Census Bureau <https://www.census.gov/> 5. UMASS Donahue Institute <http://www.donahue.umassp.edu/news-events/institute-news/new-population-estimates-for-mass-released-interactive-map-available>